

ROTATING RIGHT

MODEL 11D-2 SINGLE ACTING DUPLEX PUMP



11D-2

A 11 horsepower 2.188" stroke horizontal duplex single acting plunger pump. Available in four different fluid end materials at pump speeds up to 400 RPM. applications.

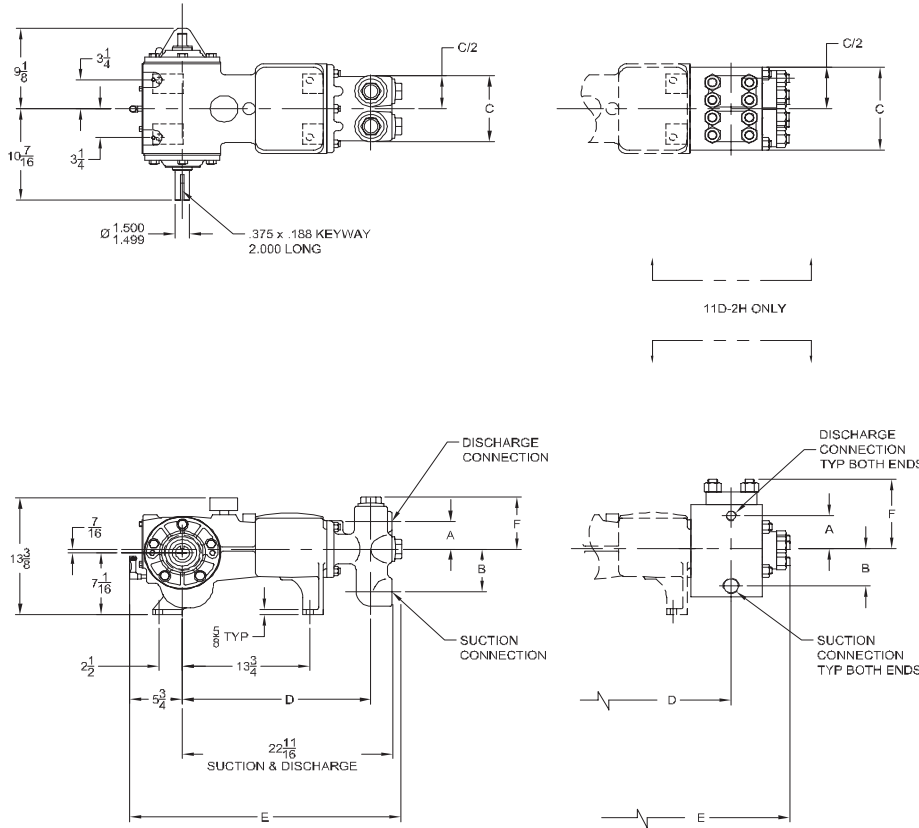
Power End Features

- Cast iron power frame
- Heavy-duty roller crankshaft bearings
- Precision type, aluminum alloy crankpin bearings
- Cast iron connecting rods
- Alloy steel crosshead pins
- Ductile Iron crankshaft with ground journals and polished throws
- Bronze bearing crosshead pin bushings
- Cast iron crossheads with upper/lower oil grooves
- One piece plungers
- Flooded sump, splash distribution lubrication
- Rated rod load is 2030 lbs.

Fluid End Features

- Threaded type glands & integral stuffing boxes
- Bronze stuffing box bushings and packing followers
- Plungers - Solid Ceramic, or Tungsten Coated
- Optional flanged connections available

11D-2 Duplex Plunger Pump



Specifications

Pump Size:

maximum plunger size x stroke length, in.(mm)
2.000 x 2.188 (50.8 x 55.56)

Rated BHP (kW) at 400 RPM: 11 (8)

Rated plunger load, pounds (kg)
2030 (921)

Maximum discharge pressure: psi (kPa)

"L" model: 1149 (7920)

"M" model: 2042 (14081)

"H" model: 4595 (31681)

Crankshaft extension:

Diameter, in.(mm): 1.500 (38.1)

Length, in.(mm): 3.375 (85.73)

Keyway width x depth, in.(mm):

$3/8$ x $3/16$ (9.53 x 4.76)

Maximum recommended sheave diameter,
in.(mm): 25 (635)

For larger sizes: **Contact Factory**

Oil Capacity, gallons (L)

Crankcase: $7/8$ (3.31)

Weight, pump only on

wood shipping skids, pounds (kg)

"L" model: 305 (138)

"M" model: 305 (138)

"H" model: 350 (159)

Standard Materials for Fluid Ends:

"L" model

Cast Ductile Iron

Cast Nickel-Aluminum-Bronze

Forged 316 Stainless Steel

Forged/Plate Carbon Steel

"M" model

Cast Ductile Iron

Cast Nickel-Aluminum-Bronze

Forged 316 Stainless Steel

Forged/Plate Carbon Steel

"H" model

Forged 15-5 Stainless Steel

Pump Model	Flange Connections		Dimensions (Inches)					
	Discharge Connection Sizes	Suction Connection Sizes	A	B	C	D	E	F
11D-2L	1 (25.4)-11 1/2 NPT	2 (50.8)-11 1/2 NPT	3 1/8	4 7/8	7 1/2	20 3/8	29 3/8	6
11D-2M	1 (25.4)-11 1/2 NPT	2 (50.8)-11 1/2 NPT	3 1/8	4 7/8	7 1/2	20 3/8	29 3/8	6
11D-2H	3/4 (19.05)-14 NPT	1 1/4 (31.75)-11 1/2 NPT	3 3/4	4 1/4	9 1/2	20	32 1/8	7 7/8

11D-2 Duplex Plunger Pump

Performance Data

PUMP	English Units					50 RPM		150 RPM		200 RPM		250 RPM		350 RPM		400 RPM	
	Plunger Dia. In.	Plunger Area Sq. In.	BPD per RPM	GPM per RPM	Max. Press. PSI	BPD	GPM	BPD	GPM	BPD	GPM	BPD	GPM	BPD	GPM	BPD	GPM
11D-2L (P100ALS)	2.000	3.1416	2.0400	0.0595	646	102	3.0	306	8.9	408	11.9	510	14.9	714	20.8	816	23.8
	1.875	2.7612	1.7930	0.0523	735	90	2.6	269	7.8	359	10.5	449	13.1	628	18.3	718	20.9
	1.750	2.4053	1.5619	0.0456	844	79	2.3	235	6.8	313	9.1	391	11.4	547	15.9	625	18.2
	1.625	2.0739	1.3467	0.0393	979	68	2.0	203	5.9	270	7.9	337	9.8	472	13.7	539	15.7
11D-2M (P100A)	1.500	1.7671	1.1475	0.0335	1149	58	1.7	173	5.0	230	6.7	287	8.4	402	11.7	459	13.4
	1.750	2.4053	1.5619	0.0456	844	79	2.3	235	6.8	313	9.1	391	11.4	547	15.9	625	18.2
	1.625	2.0739	1.3467	0.0393	979	68	2.0	203	5.9	270	7.9	337	9.8	472	13.7	539	15.7
	1.500	1.7671	1.1475	0.0335	1149	58	1.7	173	5.0	230	6.7	287	8.4	402	11.7	459	13.4
	1.375	1.4849	0.9642	0.0281	1367	49	1.4	145	4.2	193	5.6	242	7.0	338	9.8	386	11.2
	1.250	1.2272	0.7969	0.0232	1654	40	1.2	120	3.5	160	4.6	200	5.8	279	8.1	319	9.3
11D-2H (P100H)	1.000	0.7854	0.5100	0.0149	2585	26	0.7	77	2.2	102	3.0	128	4.7	179	5.2	204	5.9
	0.875	0.6013	0.3905	0.0114	3376	20	0.6	59	1.7	79	2.3	98	2.8	137	4.0	157	4.6
	0.750	0.4418	0.2869	0.0084	4595	15	0.4	44	1.3	58	1.7	72	2.1	101	2.9	115	3.3
Brake Horsepower Required						2		5		6		7		10		11	

PUMP	Metric Units					50 RPM		150 RPM		200 RPM		250 RPM		350 RPM		400 RPM	
	Plunger Dia. mm	Plunger Area cm ²	M ³ /Hr per RPM	L/Sec. per RPM	Max. Press. kPa	M ³ /Hr	L/Sec.	M ³ /Hr	L/Sec.	M ³ /Hr	L/Sec.	M ³ /Hr	L/Sec.	M ³ /Hr	L/Sec.	M ³ /Hr	L/Sec.
11D-2L (P100ALS)	51	20.268	0.0135	0.0038	4455	0.68	0.19	2.03	0.56	2.70	0.75	3.38	0.94	4.73	1.31	5.40	1.50
	48	17.814	0.0119	0.0033	5069	0.59	0.16	1.78	0.49	2.38	0.66	2.97	0.82	4.16	1.15	4.75	1.32
	44	15.518	0.0103	0.0029	5819	0.52	0.14	1.55	0.43	2.07	0.57	2.59	0.72	3.62	1.01	4.14	1.15
	41	13.380	0.0089	0.0025	6749	0.45	0.12	1.34	0.37	1.78	0.50	2.23	0.62	3.12	0.87	3.57	0.99
11D-2M (P100A)	38	11.401	0.0076	0.0021	7920	0.38	0.11	1.14	0.32	1.52	0.42	1.90	0.53	2.66	0.74	3.04	0.84
	44	15.518	0.0103	0.0029	5819	0.52	0.14	1.55	0.43	2.07	0.57	2.59	0.72	3.62	1.01	4.14	1.15
	41	13.380	0.0089	0.0025	6749	0.45	0.12	1.34	0.37	1.78	0.50	2.23	0.62	3.12	0.87	3.57	0.99
	38	11.401	0.0076	0.0021	7920	0.38	0.11	1.14	0.32	1.52	0.42	1.90	0.53	2.66	0.74	3.04	0.84
	35	9.580	0.0064	0.0018	9426	0.32	0.09	0.96	0.27	1.28	0.35	1.60	0.44	2.24	0.62	2.55	0.71
	32	7.917	0.0053	0.0015	11405	0.26	0.07	0.79	0.22	1.06	0.29	1.32	0.37	1.85	0.51	2.11	0.59
11D-2H (P100H)	29	6.413	0.0043	0.0012	14081	0.21	0.06	0.64	0.18	0.86	0.24	1.07	0.30	1.50	0.42	1.71	0.48
	25	5.067	0.0034	0.0009	17821	0.17	0.05	0.51	0.14	0.68	0.19	0.84	0.23	1.18	0.33	1.35	0.38
	22	3.879	0.0026	0.0007	23276	0.13	0.04	0.39	0.11	0.52	0.14	0.65	0.18	0.91	0.25	1.03	0.29
Kilowatts Required						1		4		4		5		7		8	

For operation below 50 RPM, an auxiliary lubrication system is required.

Volumetric Rate is based on 100% Volumetric Efficiency. Brake Horsepower/Kilowatts Required is based on 80% Mechanical Efficiency.

The information and data on this sheet is accurate to the best of our knowledge and belief, but are intended for general information only. Applications suggested for the materials are described only to help readers make their own evaluations and decisions, and are neither guarantees nor to be construed as express or implied warranties of suitability for these or other applications. National Oilwell makes no warranty either express or implied beyond that stipulated in National Oilwell Standard Terms and Conditions of Sale.

Accessories

Rotating Right offers a full line of accessories to ensure long trouble free and safe operation of your multiplex pumps.

Accessories Include:

- Pulsation Dampeners - Suction & Discharge
- Vibration Shock Switches
- Liquid Level Gauges & Switches
- Pressure Safety Valves
- Plunger Lubricators
- Fire Safety Valves
- High Discharge Pressure Switch
- Condensate Drain
- N.A.C.E. Valving
- Lubricator Level Controller
- API Valves
- Drive Options



Expendables



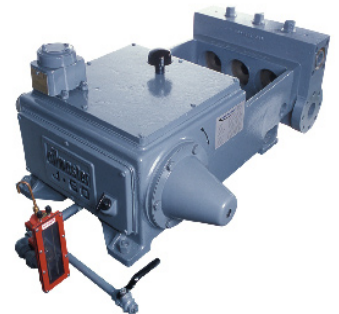
With our worldwide buying power Rotating Right is well equipped to provide a wide range of replacement parts & expendables for virtually all multiplex plunger pumps regardless of make or model.

Our expendables inventory includes plungers, packing, brass, valves, bearings, crankshafts, connecting rods and seals.



Repair & Overhauls

Rotating Right service technicians follow strict quality control procedures for every pump repair and overhaul. The use of consistent and reliable re-manufacturing techniques ensure your equipment is returned to you in "Like New" condition.



Head Office:
6120 Davies Road
Edmonton, AB
T6E 4M9

Phone: (780) 485-2010 • Toll Free: (866) 707-7867
Fax: (780) 485-1938
• Calgary • Drayton Valley • Lloydminster
www.rotatingright.com