

ROTATING RIGHT

MODEL 217Q-4 SINGLE ACTING QUINTUPLEX PUMP



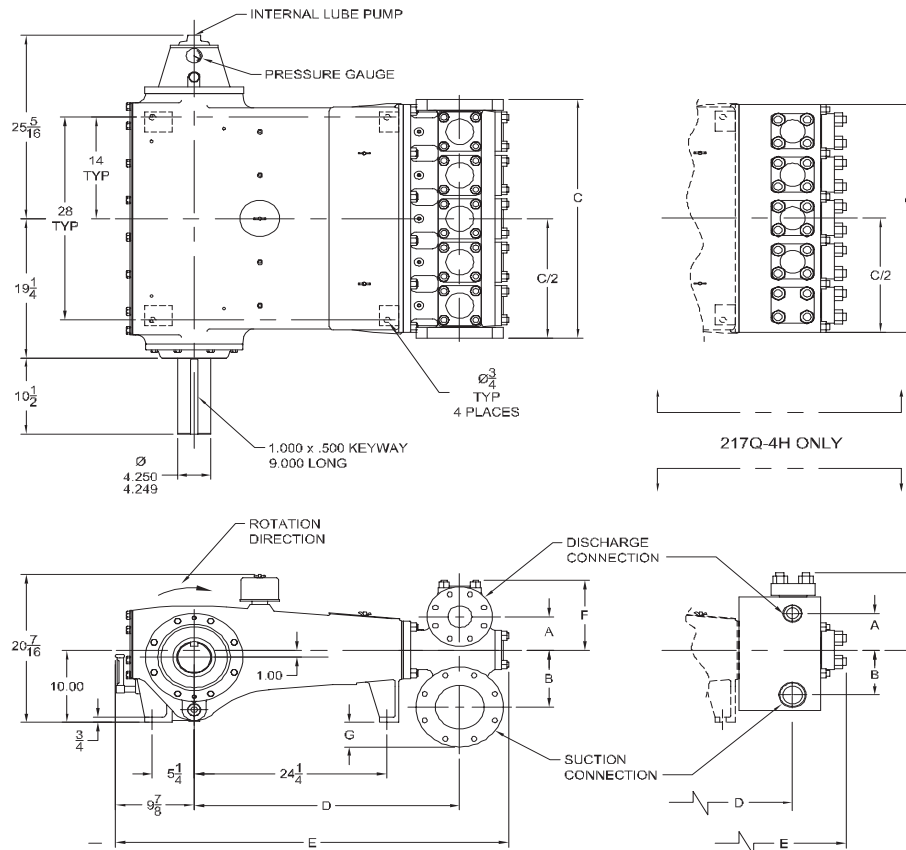
217Q-4

A 217 horsepower 4 1/2" stroke horizontal quintuplex single acting plunger pump. Available in three end materials at pump speeds up to 390 RPM and multiple accessory gear reduction unit ratios.

Features:

- Cast iron power frame
- Ductile Iron Crankshaft
- Heavy-duty, Tapered Roller Crankshaft Bearings
- Precision Type, Aluminum Alloy Crankpin Bearings
- Stainless Steel Extension Rods
- Internal Pressure Lubrication
- Ductile Iron Connecting Rods
- Alloy Steel Crosshead Pins
- Bronze Bearing Crosshead Pin Bushings
- Cast Iron Crossheads with upper/lower oil grooves
- Rated Rod Load is 8800 lbs.
- Bolted Valve Covers
- Integral Stuffing Boxes & Glands

217Q-4 Quintuplex Plunger Pump



Specifications

Pump Size:

maximum plunger size x stroke length, in.(mm):
3.375 x 4.500 (85.725 x 114.3)

Rated BHP (kW) at 390 RPM: 217 (162)

Rated plunger load, pounds (kg): 8800(3992)

Maximum discharge pressure: psi (kPa)

"L" model: 1440 (9929)

"M" model: 3600 (24821)

"H" model: 6000 (41369)

Crankshaft extension:

Diameter, in.(mm): 4.250 (107.95)

Length, in.(mm): 10.50 (266.7)

Keyway width x depth, in.(mm):

1 x 1/2 (25.4 x 38.1)

Maximum recommended sheave diameter,

in.(mm): 53 (1346.2)

For larger sizes: **Contact Factory**

Pinion shaft extension,

if gear reducer is supplied, in.(mm)

For belt or chain drive: **Contact Factory**

For direct drive: Diameter: 2.500 (63.5)

Length: 5.000 (127.0)

Keyway (width x length):

5/8 x 5/16 (15.88 x 7.94)

Accessory gear reduction unit:

2.06:1, 2.26:1, 3.60:1, 4.25:1, 4.65:1,

4.88:1, 5.13:1, 5.40:1, 5.69:1

Oil Capacity, gallons (L)

Crankcase: 7 (26.5)

Gear Reducer - varies with ratio:

2.00 to 2.25 (7.57 to 8.52)

Weight, pump only on

wood shipping skids, pounds (kg): 2948 (1337)

Standard Materials for Fluid Ends:

"L" & "M" models

Cast Nickel-Aluminum-Bronze

Cast Duplex Stainless Steel

Forged/Plate Carbon Steel

"H" model

Forged/Plate Carbon Steel

Forged 15-5 Stainless Steel

Forged Nickel-Aluminum-Bronze

Pump Model	Flange Connections		Dimensions (Inches)						
	Discharge Connection Sizes	Suction Connection Sizes	A	B	C	D	E	F	G
217Q-4L	3 (76.2)-ANSI 600 FF	6 (152.4)-ANSI 150 FF	4 5/8	7 7/8	33	33 3/8	49 7/16	9 5/8	3 3/8
217Q-4M	2 (50.8)-ANSI 1500 FF	4 (101.6)-ANSI 300 FF	5 1/16	5 7/8	33	33	48 11/16	9 1/2	7/8
217Q-4H	2 (50.8)-11 1/2 NPT	3 (76.2)-8 NPT	5 1/16	6 3/16	31 1/2	33	49 1/4	10 3/4	-1 5/8

217Q-4 Quintuplex Plunger Pump

Performance Data

PUMP	English Units					100 * RPM		150 RPM		200 RPM		250 RPM		300 RPM		390 RPM	
	Plunger Dia. In.	Plunger Area Sq. In.	BPD per RPM	GPM per RPM	Max. Press. PSI	BPD	GPM	BPD	GPM	BPD	GPM	BPD	GPM	BPD	GPM	BPD	GPM
217Q-4L (HP200AL)	3.375	8.9462	29.8759	0.8714	984	2988	87.1	4482	130.7	5976	174.3	7469	217.8	8963	261.4	11652	339.8
	3.250	8.2958	27.7038	0.8080	1061	2771	80.8	4156	121.2	5541	161.6	6926	202.0	8312	242.4	10805	315.1
	3.125	7.6699	25.6137	0.7471	1147	2562	74.7	3843	112.1	5123	149.4	6404	186.8	7685	224.1	9990	291.4
	3.000	7.0686	23.6056	0.6885	1245	2361	68.8	3541	103.3	4722	137.7	5902	172.1	7082	206.5	9207	268.5
	2.875	6.4918	21.6795	0.6323	1356	2168	63.2	3252	94.8	4336	126.5	5420	158.1	6504	189.7	8455	246.6
	2.750	5.9396	19.8353	0.5785	1440	1984	57.9	2976	86.8	3968	115.7	4959	144.6	5951	173.6	7736	225.6
2.625	5.4119	18.0731	0.5271	1440	1808	52.7	2711	79.1	3615	105.4	4519	131.8	5422	158.1	7049	205.6	
217Q-4M (HP200AM)	2.500	4.9087	16.3928	0.4781	1793	1640	47.8	2459	71.7	3279	95.6	4099	119.5	4918	143.4	6394	186.5
	2.375	4.4301	14.7945	0.4315	1986	1480	43.2	2220	64.7	2959	86.3	3699	107.9	4439	129.5	5770	168.3
	2.250	3.9761	13.2782	0.3873	2213	1328	38.7	1992	58.1	2656	77.5	3320	96.8	3984	116.2	5179	151.0
	2.125	3.5466	11.8438	0.3454	2481	1185	34.5	1777	51.8	2369	69.1	2961	86.4	3554	103.6	4620	134.7
	2.000	3.1416	10.4914	0.3060	2801	1050	30.6	1574	45.9	2099	61.2	2623	76.5	3148	91.8	4092	119.3
	1.875	2.7612	9.2209	0.2689	3187	923	26.9	1384	40.3	1845	53.8	2306	67.2	2767	80.7	3597	104.9
217Q-4H (HP200MS)	1.750	2.4053	8.0325	0.2343	3600	804	23.4	1205	35.1	1607	46.9	2009	58.6	2410	70.3	3133	91.4
	1.625	2.0739	6.9260	0.2020	4243	693	20.2	1039	30.3	1386	40.4	1732	50.5	2078	60.6	2702	78.8
	1.500	1.7671	5.9014	0.1721	4980	591	17.2	886	25.8	1181	34.4	1476	43.0	1771	51.6	2302	67.1
	1.375	1.4849	4.9588	0.1446	5926	496	14.5	744	21.7	992	28.9	1240	36.2	1488	43.4	1934	56.4
1.250	1.2272	4.0982	0.1195	6000	410	12.0	615	17.9	820	23.9	1025	29.9	1230	35.9	1599	46.6	
Brake Horsepower Required						56		84		112		139		167		217	

PUMP	Metric Units					100 * RPM		150 RPM		200 RPM		250 RPM		300 RPM		390 RPM	
	Plunger Dia. mm	Plunger Area cm ²	M ³ /Hr per RPM	L/Sec. per RPM	Max. Press. kPa	M ³ /Hr	L/Sec.	M ³ /Hr	L/Sec.	M ³ /Hr	L/Sec.	M ³ /Hr	L/Sec.	M ³ /Hr	L/Sec.	M ³ /Hr	L/Sec.
217Q-4L (HP200AL)	86	57.717	0.1979	0.0550	6782	19.8	5.5	29.7	8.2	39.6	11.0	49.5	13.7	59.4	16.5	77.2	21.4
	83	53.521	0.1835	0.0510	7314	18.4	5.1	27.5	7.6	36.7	10.2	45.9	12.7	55.1	15.3	71.6	19.9
	79	49.483	0.1697	0.0471	7911	17.0	4.7	25.4	7.1	33.9	9.4	42.4	11.8	50.9	14.1	66.2	18.4
	76	45.604	0.1564	0.0434	8584	15.6	4.3	23.5	6.5	31.3	8.7	39.1	10.9	46.9	13.0	61.0	16.9
	73	41.883	0.1436	0.0399	9346	14.4	4.0	21.5	6.0	28.7	8.0	35.9	10.0	43.1	12.0	56.0	15.6
	70	38.320	0.1314	0.0365	9929	13.1	3.6	19.7	5.5	26.3	7.3	32.8	9.1	39.4	10.9	51.2	14.2
67	34.915	0.1197	0.0333	9929	12.0	3.3	18.0	5.0	23.9	6.7	29.9	8.3	35.9	10.0	46.7	13.0	
217Q-4M (HP200AM)	64	31.669	0.1086	0.0302	12360	10.9	3.0	16.3	4.5	21.7	6.0	27.1	7.5	32.6	9.0	42.3	11.8
	60	28.581	0.0980	0.0272	13696	9.8	2.7	14.7	4.1	19.6	5.4	24.5	6.8	29.4	8.2	38.2	10.6
	57	25.652	0.0880	0.0244	15260	8.8	2.4	13.2	3.7	17.6	4.9	22.0	6.1	26.4	7.3	34.3	9.5
	54	22.881	0.0785	0.0218	17108	7.8	2.2	11.8	3.3	15.7	4.4	19.6	5.4	23.5	6.5	30.6	8.5
	51	20.268	0.0695	0.0193	19313	6.9	1.9	10.4	2.9	13.9	3.9	17.4	4.8	20.8	5.8	27.1	7.5
	48	17.814	0.0611	0.0170	21974	6.1	1.7	9.2	2.5	12.2	3.4	15.3	4.2	18.3	5.1	23.8	6.6
217Q-4H (HP200MS)	44	15.518	0.0532	0.0148	24821	5.3	1.5	8.0	2.2	10.6	3.0	13.3	3.7	16.0	4.4	20.7	5.8
	41	13.380	0.0459	0.0127	29256	4.6	1.3	6.9	1.9	9.2	2.5	11.5	3.2	13.8	3.8	17.9	5.0
	38	11.401	0.0391	0.0109	34335	3.9	1.1	5.9	1.6	7.8	2.2	9.8	2.7	11.7	3.3	15.2	4.2
	35	9.580	0.0328	0.0091	40861	3.3	0.9	4.9	1.4	6.6	1.8	8.2	2.3	9.9	2.7	12.8	3.6
32	7.917	0.0271	0.0075	41369	2.7	0.8	4.1	1.1	5.4	1.5	6.8	1.9	8.1	2.3	10.6	2.9	
Kilowatts Required						42		63		84		104		124		162	

Volumetric Rate is based on 100% Volumetric Efficiency. Brake Horsepower/Kilowatts Required is based on 90% Mechanical Efficiency. *Operation below 150 RPM requires an "optional" externally-mounted auxiliary lubrication system.

Accessories

Rotating Right offers a full line of accessories to ensure long trouble free and safe operation of your multiplex pumps.

Accessories Include:

- Pulsation Dampeners - Suction & Discharge
- Vibration Shock Switches
- Liquid Level Gauges & Switches
- Pressure Safety Valves
- Plunger Lubricators
- Fire Safety Valves
- High Discharge Pressure Switch
- Condensate Drain
- N.A.C.E. Valving
- Lubricator Level Controller
- API Valves
- Drive Options



Expendables



With our worldwide buying power Rotating Right is well equipped to provide a wide range of replacement parts & expendables for virtually all multiplex plunger pumps regardless of make or model.

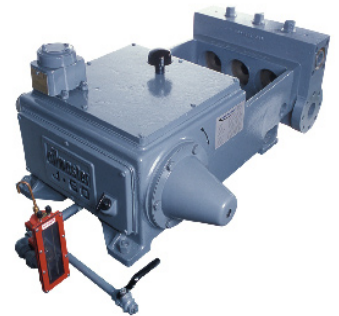


Our expendables inventory includes plungers, packing, brass, valves, bearings, crankshafts, connecting rods and seals.



Repair & Overhauls

Rotating Right service technicians follow strict quality control procedures for every pump repair and overhaul. The use of consistent and reliable re-manufacturing techniques ensure your equipment is returned to you in "Like New" condition.



Head Office:
6120 Davies Road
Edmonton, AB
T6E 4M9

Phone: (780) 485-2010 • Toll Free: (866) 707-7867
Fax: (780) 485-1938
• Calgary • Drayton Valley • Lloydminster
www.rotatingright.com