

ROTATING RIGHT

MODEL D-750L SINGLE ACTING TRIPLEX PISTON PUMP



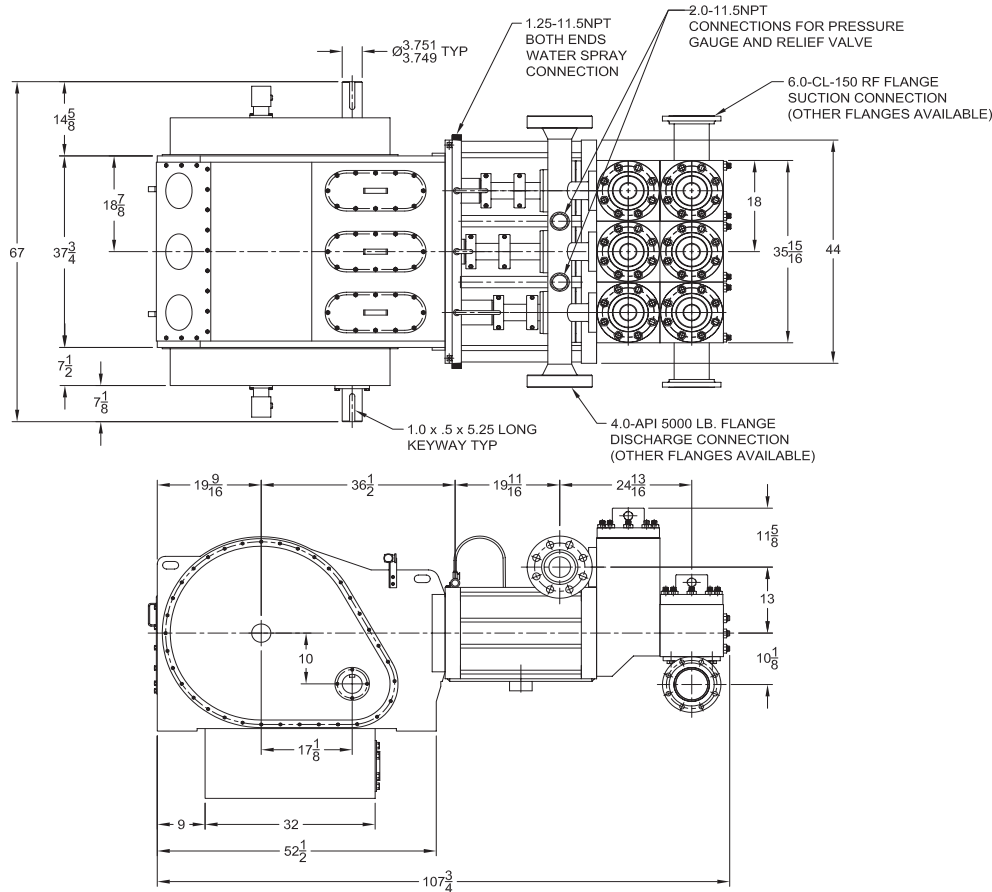
D-750L

A 750 horsepower 8" stroke horizontal triplex single acting piston pump. Available with forged alloy steel fluid ends at pump speeds up to 120 RPM and external gear reduction unit.

Features

- Allow steel power frame
- Helical gears
- Roller main bearings
- Spherical pinion bearings
- Allow steel crank shaft
- Replaceable bronze Crosshead guides

D-750L Triplex Piston Pump



Specifications

- Pump Type:** Horizontal Reciprocating Power Pump
Positive Displacement with Single-Acting Pistons
- Maximum Input Horsepower:** 750 Contin
- Stroke Length:** 8 inches
- Maximum Rod Load:** 85,000 lbs.
- Approximate Weight:** 11,500 lbs.
- Pump Power End:** Fabricated of High Strength Steel
- Gears:** Double Helical
- Gear Ratio:** 4.95:1
- Rod Bearings:** Shell Type Replaceable
- Main Bearings:** Straight Roller
- Pinion Bearings:** Spherical Roller
- Crankshaft:** One Piece Forged Alloy Steel
- Connecting Rod:** One Piece Forging
- Crosshead Guide:** Bronze Replaceable
- Fluid End:** Piston Type Segmented Block Design. Machined From High Strength Alloy Steel, Heat Treated and Ultrasonic Tested
- Piston Diameter:** 4.5 to 7 inches
- Discharge Outlet:** 4 API 5000 RJ
- Suction Inlet:** 6 ANSI 150 RF
- Valves and Seats:** API-6 Stem Guided, Hardened Steel Seats
- Piston Liners:** Chrome or Ceramic Sleeved
- Power End Lubrication:** 35 GPM Required, Optional Hydraulic Lubrication System w/ Sump Available

D-750L Triplex Piston Pump

Performance Data

Piston Diameter	Displacement Factors* @ 100% V. E.	Pump Speed in Crankshaft Revolutions Per Minute (RPM)											
		60			80		100		120		140***		
		Flow @ 100% V. E.	Max Press. @ Flow		Flow @ 100% V. E.	Max Press. @ Flow	Flow @ 100% V. E.	Max Press. @ Flow	Flow @ 100% V. E.	Max Press. @ Flow	Flow @ 100% V. E.	Max Press. @ Flow	
U.S. Gal. per Rev.	U.S. Gal. per Min.	PSIG	U.S. Gal. per Min.	PSIG	U.S. Gal. per Min.	PSIG	U.S. Gal. per Min.	PSIG	U.S. Gal. per Min.	PSIG	U.S. Gal. per Min.	PSIG	
Inches	GPR	GPM	PSIG	GPM	PSIG	GPM	PSIG	GPM	PSIG	GPM	PSIG	GPM	PSIG
7.00	3.999	240	2211	320	2209	400	2208	480	2208	560	1952		
6.50	3.448	207	2563	276	2562	345	2561	414	2560	483	2264		
6.00	2.938	176	3008	235	3006	294	3005	353	3004	411	2657		
5.50	2.468	148	3581	197	3579	247	3577	296	3576	346	3162		
5.00	2.040	122	4333	163	4330	204	4328	245	4327	286	3826		
4.50	1.652	99	5000	132	5000	165	5000	198	5000	231	4724		
Input Power	Brake** Horsepower	364		485		606		727		750			
Pinion RPM @ 4.95:1 Gear Ratio		297		396		495		594		693			



Head Office:
6120 Davies Road
Edmonton, AB
T6E 4M9

Phone: (780) 485-2010 • Toll Free: (866) 707-7867
Fax: (780) 485-1938
• Calgary • Drayton Valley • Lloydminster
www.rotatingright.com