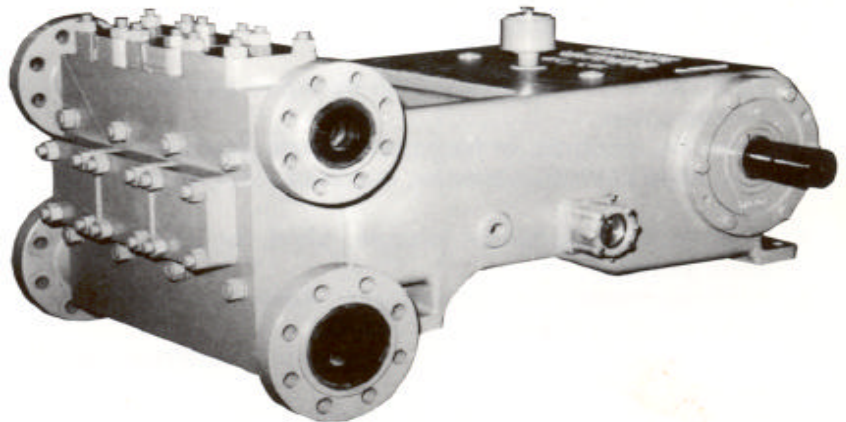




TAC (GD-65T) CONTINUOUS DUTY PLUNGER PUMP

SPECIFICATIONS:

Maximum BHP: 65.5 (49 kw)
Maximum RPM: 500
No. of Plungers: 3
Stroke Length: 3 in. (76 mm)
Plunger Load: 5,200 lbs. (2,360 kg)
Discharge Hydrostatic Test Pressure
 LP – 3,300 psi (232 kg/cm²)
 MP – 4,500 psi (316 kg/cm²)
 HP – 7,500 psi (527 kg/cm²)
Oil Capacity: 6 gal. (23 liters)
Pump Weight: 1,790 lbs. (812 kg)



PERFORMANCE RATINGS

Plunger Size		Maximum Pressure		Displacement per revolution		Gallons Per Minute/Liters at the following RPM:											
						175		200		300		400		450		500	
in.	mm	PSI	kg/cm ²	gal.	liters	GPM	LPM	GPM	LPM	GPM	LPM	GPM	LPM	GPM	LPM	GPM	LPM
LP ALUMINUM BRONZE (TACA), LP CARBON STEEL (TACE), MP CARBON STEEL (TACC) FLUID ENDS																	
3.00	76	735	52	0.275	1.041	48	182	55	208	83	312	110	416	124	468	138	520
2.75	70	875	62	0.231	0.874	40	153	46	175	79	262	92	350	104	393	116	437
2.50	64	1060	75	0.191	0.723	33	127	38	145	57	217	76	289	86	325	96	361
2.25	57	1310	92	0.155	0.587	27	103	31	117	47	176	62	235	70	264	78	293
2.00	51	1655	116	0.122	0.462	21	81	24	92	37	139	49	185	55	208	61	231
1.75	44	2100	152	0.094	0.356	16	62	19	71	28	107	38	142	42	160	47	178
1.5	38	2220	156	0.069	0.261	12	46	14	52	21	78	28	104	31	118	35	131
HP ALUMINUM BRONZE (TACB) FLUID END																	
1.5	38	2915	205	0.069	0.261	12	46	14	52	21	78	28	104	31	118	35	131
1.25	32	4200	295	0.048	0.182	8	32	10	36	14	55	19	73	22	82	24	91
1	25	5000	352	0.031	0.117	5	21	6	23	9	35	12	47	14	53	16	59

Based on 90% mechanical efficiency and 100% volumetric efficiency.
For applications within shaded area contact Customer Service.

Specifications subject to change without notice.



TAC (GD-65T) CONTINUOUS DUTY PLUNGER PUMP

STANDARD EQUIPMENT

- Oil level gauge.
- Crankshaft type construction.
- Double-extended crankshaft 2.62" (6.65 mm) dia., 5.0" (12.7 mm) long.
- Keyway (L x W x H) 4.35" x .625" x .36" (11.05 x 1.59 x .91 mm).
- Turbo lubrication.
- Suction and discharge connections on either side.
- Stainless steel clamp connections between plungers and push rods.
- Removable stuffing boxes with threaded glands.
- Cradle cover.
- Colmonoy, ceramic, or tungsten carbide plungers.
- Disc style aluminum bronze, stainless steel, or monel valves.
- Wing-guided aluminum bronze, steel, or stainless steel valves.
- Non-adjustable packing standard. Kevlar or double stack packing optional.

ACCESSORIES

- Mechanical lubricator for stuffing box packing.
- Suction stabilizers.
- Discharge pulsation dampeners.
- Discharge pressure relief valve.
- Fabricated steel skid under pump and drive.
- V-belt drive assembly.
- Totally enclosed metal belt guard (OSHA approved).
- Valve seat puller.
- Valve seat driver.
- Valve cage wrench.
- Companion flanges.

Suction Manifold

TACA	3" 150# ANSI
TACE	3" 1500#
TACC	3" 1500#
TACB	3" 150# ANSI

Discharge Manifold

2" 900# ANSI
2" 1500#
2" 1500#
1-1/2" 7500# ANSI

NOTE: All installations must contain a pressure relief valve in the discharge line near the pump to help prevent breakage.

Dimensions: Length 44.5", Width 35.5", Height 24"

MATERIAL SPECIFICATIONS

SERVICE	TYPE	CYLINDER	PACKING	STUFFING BOX	COMPONENT	MATERIAL
TACA	Low Pressure	ASTM B-148-9D	Buna-N Non-Adjustable Type	ASTM B-148-9D	Crankshaft	Cast Nodular Iron
		Aluminum Bronze		Aluminum Bronze	Connecting Rods	Cast Nodular Iron
TACE	Low Pressure	AISI 1035	Buna-N Non-Adjustable Type	AISI 1035	Crossheads	Cast Nodular Iron
		Carbon Steel		Carbon Steel	Frame	Cast Iron
TACC	Medium Pressure	AISI 1035	Buna-N Non-Adjustable Type	AISI 1035	Bearing-Main	Tapered Roller
		Carbon Steel		Carbon Steel	Bearing-Crankpin	Steel Lined with Tin & Babbit
TACB	High Pressure	ASTM B-148-9D	Buna-N Non-Adjustable Type	ASTM B-148-9D	Bushing-Crosshead	Bronze

*Materials listed are furnished as standard equipment. Alternate materials available upon request.



Head Office:
6120 Davies Road
Edmonton, AB
T6E 4M9

Phone: (780) 485-2010 • Toll Free: (866) 707-7867
Fax: (780) 485-1938
• Calgary • Drayton Valley • Lethbridge
www.rotatingright.com