

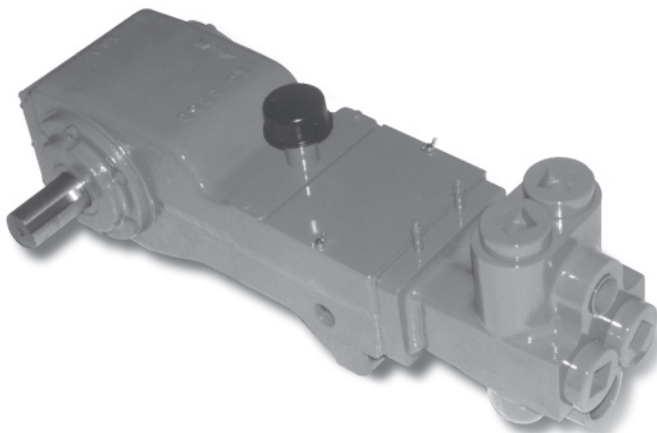
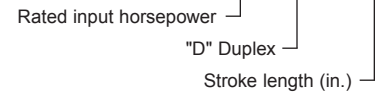
ROTATING RIGHT

# NATIONAL OILWELL 14D-25 TECHNICAL DATA SHEET



## Duplex Plunger Pump

# 14D-25



This 2 1/2" stroke pump is designed for a variety of fluid transfer applications.

### Field Connections in. (mm)

Pump Model	Discharge Connection Size	Suction Connection Size
14D-25	1-1/4 (31.8) FNP Threaded.	2"(50.8) FNP Threaded.

### Dimensions

Pump Type	Length	Width	Height
14D-25	31"	14-1/2"	10-3/4"

## Pump Specifications

Pump Size (Max. Plunger Diameter x Stroke) in. (mm) .....2 x 2-1/2 (50.8 x 63.5)  
 Rated BHP At 400 RPM (Kw) .....14 (10.5)  
 Rated Plunger Load, pounds (Kg).....2,560 (1162)

**Maximum Working Pressure:** PSI (kPa) .....2,350 (16,192)

**Crankshaft Extension:** in. (mm) .....2 (50.8)

### Weight: - Lbs. (Kg)

Pump Only On Wood Shipping Skids.....320 (103.5)

## Standard Equipment

- Aluminum Bronze Fluid End
- Aluminum Bronze Valve Covers
- Aluminum Bronze Stuffing Boxes & Nuts
- Bronze Stuffing Box Internals
- Ceramic or Metal Plungers
- General Service Plunger Packing
- Stainless Steel Intermediate Rods
- Chamber Cover
- Crankcase Breather

## Optional Equipment

- Alternate Fluid End Materials
- Alternate Fluid End Valve Styles
- Custom Designs For Specialized Applications

## Accessories

- Packing Lubricator
- Pulsation Dampeners
- Relief Valves
- Valve Service Kit
- Complete Unitization Services

**Continuous Duty Performance Data** (Volumes Indicated Are Displacement of Incompressible Fluid)

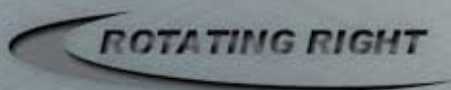
**English Units**

Plunger Dia. In.	Plunger Area Sq. In.	BPD Per RPM	GPM Per RPM	Max. Press. PSI	100 RPM		150 RPM		200 RPM		250 RPM		300 RPM		350 RPM		400 RPM			
					BPD	GPM	BPD	GPM	BPD	GPM	BPD	GPM	BPD	GPM	BPD	GPM	BPD	GPM		
<b>14D-25</b>																				
1	0.7854	0.5831	0.0170	2350	58	1.70	87	2.55	117	3.40	146	4.25	175	5.10	204	5.95	233	6.80		
1 1/4	1.2272	0.9111	0.0266	2086	91	2.66	137	3.98	182	5.31	228	6.64	273	7.97	319	9.30	364	10.63		
1 1/2	1.7672	1.3120	0.0383	1449	131	3.83	197	5.74	262	7.65	328	9.56	394	11.48	459	13.39	525	15.30		
1 3/4	2.4053	1.7857	0.0521	1064	179	5.21	268	7.81	357	10.41	446	13.02	536	15.62	625	18.22	714	20.83		
2	3.1416	2.3324	0.0680	815	233	6.80	350	10.20	466	13.60	583	17.00	700	20.40	816	23.80	933	27.20		
Brake Horsepower Required:					3.6		5.4		7.2		9.0		10.8		12.6		14			

**Metric Units**

Plunger Dia. mm	Plunger Area Sq. cm.	M <sup>3</sup> /D Per RPM	L/Min. Per RPM	Max. Press. kPa	100 RPM		150 RPM		200 RPM		250 RPM		300 RPM		350 RPM		400 RPM			
					M <sup>3</sup> /D	L/Min.	M <sup>3</sup> /D	L/Min.	M <sup>3</sup> /D	L/Min.	M <sup>3</sup> /D	L/Min.	M <sup>3</sup> /D	GPM	M <sup>3</sup> /D	L/Min.	M <sup>3</sup> /D	L/Min.		
<b>14D-25</b>																				
25	5.0671	0.0927	0.0643	16,203	9	6.43	14	9.65	19	12.87	23	16.09	28	19.30	32	22.52	37	25.74		
32	7.9174	0.1449	0.1005	14,382	14	10.05	22	15.08	29	20.11	36	25.13	43	30.16	51	35.19	58	40.22		
38	11.4010	0.2086	0.1448	9,991	21	14.48	31	21.72	42	28.96	52	36.19	63	43.43	73	50.67	83	57.91		
44	15.5180	0.2839	0.1971	7,336	28	19.71	43	29.56	57	39.41	71	49.26	85	59.12	99	68.97	114	78.82		
51	20.2684	0.3708	0.2574	5,619	37	25.74	56	38.61	74	51.48	93	64.35	111	77.21	130	90.08	148	102.95		
Kilowatts Required:					2.7		4.0		5.4		6.7		8.0		9.4		10.4			

Volume is based on 100% volumetric efficiency. Brake horsepower is based on 90% mechanical efficiency



**Head Office:**  
6120 Davies Road  
Edmonton, AB  
T6E 4M9

Phone: (780) 485-2010 • Toll Free: (866) 707-7867  
Fax: (780) 485-1938  
• Calgary • Drayton Valley • Lethbridge  
[www.rotatingright.com](http://www.rotatingright.com)