

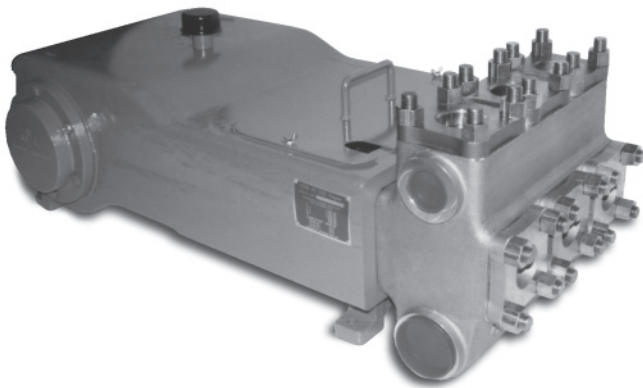
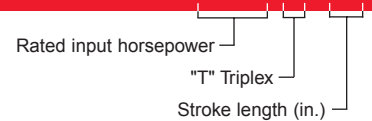
ROTATING RIGHT

# NATIONAL OILWELL 29T-3 TECHNICAL DATA SHEET



## Triplex Plunger Pump

# 29T-3



This 3" stroke pump is designed for a variety of fluid transfer applications.

### Field Connections in. (mm)

Pump Model	Discharge Connection Size	Suction Connection Size
29T-3	1-1/2 (38.1) FNP Threaded.	2-1/2" (63.5) FNP Threaded.

### Dimensions

Pump Type	Length	Width	Height
29T-3	37-1/2"	24-1/2"	13"

## Pump Specifications

Pump Size (Max. Plunger Diameter x Stroke) in. (mm) .....2-1/2 x 3 (63.5 x 76.2)  
 Rated BHP At 400 RPM (Kw) .....29 (21.75)  
 Rated Plunger Load, pounds (Kg).....2,950 (1162)

**Maximum Working Pressure:** PSI (kPa) .....2,350 (16,192)

**Crankshaft Extension:** in. (mm) .....2-1/2 (63.5)

### Weight: - Lbs. (Kg)

Pump Only On Wood Shipping Skids.....800 (360)

## Standard Equipment

- Aluminum Bronze Fluid End
- Aluminum Bronze Valve Covers
- Aluminum Bronze Stuffing Boxes & Nuts
- Bronze Stuffing Box Internals
- Ceramic or Metal Plungers
- General Service Plunger Packing
- Stainless Steel Intermediate Rods
- Chamber Cover
- Crankcase Breather

## Optional Equipment

- Alternate Fluid End Materials
- Alternate Fluid End Valve Styles
- Custom Designs For Specialized Applications

## Accessories

- Packing Lubricator
- Pulsation Dampeners
- Relief Valves
- Valve Service Kit
- Complete Unitization Services

**Continuous Duty Performance Data** (Volumes Indicated Are Displacement of Incompressible Fluid)

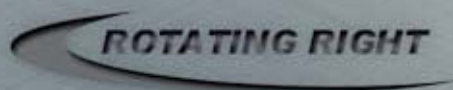
**English Units**

Plunger Dia. In.	Plunger Area (Sq. In.)	BPD Per RPM	GPM Per RPM	Max. Press. PSI	100 RPM		150 RPM		200 RPM		250 RPM		300 RPM		350 RPM		400 RPM		
					BPD	GPM	BPD	GPM	BPD	GPM	BPD	GPM	BPD	GPM	BPD	GPM	BPD	GPM	
<b>29T-3</b>																			
1 1/4	1.2272	1.6400	0.0478	2350	164	4.78	246	7.17	328	9.56	410	11.95	492	14.34	574	16.73	656	19.13	
1 1/2	1.7672	2.3616	0.0689	1698	236	6.89	354	10.33	472	13.77	590	17.21	708	20.66	827	24.10	945	27.54	
1 3/4	2.4053	3.2143	0.0937	1247	321	9.37	482	14.06	643	18.74	804	23.43	964	28.11	1125	32.80	1286	37.49	
2	3.1416	4.1983	0.1224	955	420	12.24	630	18.36	840	24.48	1050	30.60	1259	36.72	1469	42.84	1679	48.96	
2 1/4	3.9761	5.3135	0.1549	755	531	15.49	797	23.24	1063	30.98	1328	38.73	1594	46.47	1860	54.22	2125	61.97	
2 1/2	4.9088	6.5599	0.1913	611	656	19.13	984	28.69	1312	38.25	1640	47.81	1968	57.38	2296	66.94	2624	76.50	
Brake Horsepower Required:					7.57		11.3		15.2		18.9		22.7		26.5		29.0		

**Metric Units**

Plunger Dia. mm	Plunger Area Sq. cm.	M <sup>3</sup> /D Per RPM	L/Min. Per RPM	Max. Press. kPa	100 RPM		150 RPM		200 RPM		250 RPM		300 RPM		350 RPM		400 RPM		
					M <sup>3</sup> /D	L/Min.	M <sup>3</sup> /D	L/Min.	M <sup>3</sup> /D	L/Min.	M <sup>3</sup> /D	L/Min.	M <sup>3</sup> /D	GPM	M <sup>3</sup> /D	L/Min.	M <sup>3</sup> /D	L/Min.	
<b>29T-3</b>																			
32	7.9174	0.2607	0.1810	16,203	26	18.10	39	27.15	52	36.19	65	45.24	78	54.29	91	63.34	104	72.39	
38	11.4010	0.3755	0.2606	11,707	38	26.06	56	39.09	75	52.12	94	65.15	113	78.18	131	91.21	150	104.24	
44	15.5180	0.5110	0.3547	8,598	51	35.47	77	53.21	102	70.94	128	88.68	153	106.41	179	124.15	204	141.88	
51	20.2684	0.6675	0.4633	6,584	67	46.33	100	69.49	133	92.66	167	115.82	200	138.99	234	162.15	267	185.31	
57	25.6522	0.8448	0.5863	5,206	84	58.63	127	87.95	169	117.27	211	146.59	253	175.90	296	205.22	338	234.54	
64	31.6694	1.0430	0.7239	4,213	104	72.39	156	108.58	209	144.78	261	180.97	313	217.16	365	253.36	417	289.55	
Kilowatts Required:					5.7		8.4		11.3		14.0		16.9		19.8		21.6		

Volume is based on 100% volumetric efficiency. Brake horsepower is based on 90% mechanical efficiency



**Head Office:**  
6120 Davies Road  
Edmonton, AB  
T6E 4M9

Phone: (780) 485-2010 • Toll Free: (866) 707-7867  
Fax: (780) 485-1938  
• Calgary • Drayton Valley • Lethbridge  
[www.rotatingright.com](http://www.rotatingright.com)