

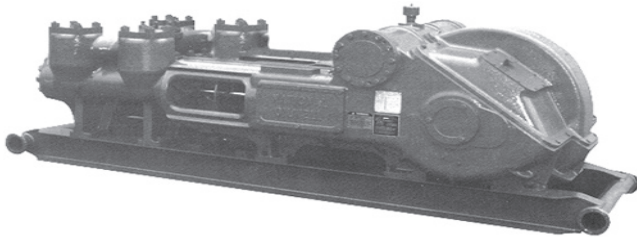
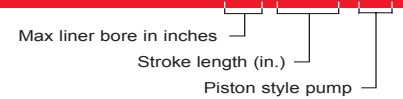
ROTATING RIGHT

NATIONAL OILWELL 612-P TECHNICAL DATA SHEET



Duplex Piston Pump

612-P



This NOI Duplex Pump provides superior service for most crude oil pipeline pumping applications.

Field Connections in. (mm)

Discharge Connection Size	Suction Connection Size
4" ANSI-400 FNPT	6" ANSI-300 FNPT

Dimensions Pump w/ Sub-Base

Length	Width	Height
11' - 1 1/2"	4' - 10 1/8"	3' - 10.0"

Pump Specifications:

Pump Size (Piston Diameter x Stroke) in. (mm).....6 x12 (152.4 x 304.8)
 Gear Ratio.....5.06 : 1
 Rated BHP At 70 RPM (kw).....140 (104.4)
 Rated Rod Load, pounds (Kg)15,021 (6,676)

Maximum Working Pressure: PSI (kPa)765 (5,270.9)

Pinion Shaft Extension: in. (mm)

Diameter3.628 (92.15)
 Length.....10 (254)
 Keyway (Width x Depth)7/8 x 5/16 (22.23 x 7.94)

Oil Capacity: Gallons (L)

Crankcase:16 (60.57)

Weight: Pump Mounted on Sub-Base:10,290 (4667.46)

Standard Equipment

- Cast Iron Fluid End
- Chrome Iron Liners
- Chrome Plated Piston Rods
- Slush Type Valve
- Replaceable Urethane Valve Discs
- Alloy Steel Valve Seats

Accessories

- Relief Valves
- Valve Service Kit
- Complete Unitization Services

Quick Maintenance Features

- Horizontal Design
- Built-in Bearing Clearance
- Large Power End Access Covers
- Replaceable Gear Unit
- Tapered Roller Bearings

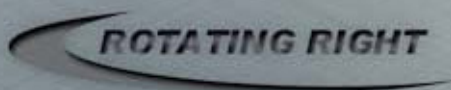
612-P Performance Data (Volumes Indicated are Displacement of Incompressible Fluid)

English Units

Piston Size in.	Maximum Working Pressure PSI	Gallons per rev.	Displacement					
			Pump Speed 30 RPM	Pump Speed 40 RPM	Pump Speed 50 RPM	Pump Speed 60 RPM	Pump Speed 70 RPM	
612-P								
5"	765	3.79	115	150	190	225	265	
5 1/2"	625	4.65	140	185	230	280	325	
6"	520	5.60	170	225	280	335	390	
Brake Horsepower Required			60	80	100	120	140	

Metric Units

Piston Size (mm)	Maximum Working Pressure kPa	Leters per rev.	Displacement				
			Pump Speed 30 RPM	Pump Speed 40 RPM	Pump Speed 50 RPM	Pump Speed 60 RPM	Pump Speed 70 RPM
612-P							
127	5274.52	14.35	2921	3810	4826	5715	6731
139.7	4309.25	17.60	3556	4699	5842	7112	8255
152.4	3585.30	21.20	4318	5715	7112	8509	9906
Kilowatts Required			1524	2032	2540	3048	3556



Head Office:
6120 Davies Road
Edmonton, AB
T6E 4M9

Phone: (780) 485-2010 • Toll Free: (866) 707-7867
Fax: (780) 485-1938
• Calgary • Drayton Valley • Lethbridge
www.rotatingright.com