

ROTATING RIGHT

MODEL 130T-4 SINGLE ACTING TRIPLEX PUMP



130T-4

A 130 horsepower 4" stroke horizontal triplex single acting plunger pump. Available in nickel-aluminum-bronze fluid end material at pump speeds up to 450 RPM and multiple accessory gear reduction unit ratios.

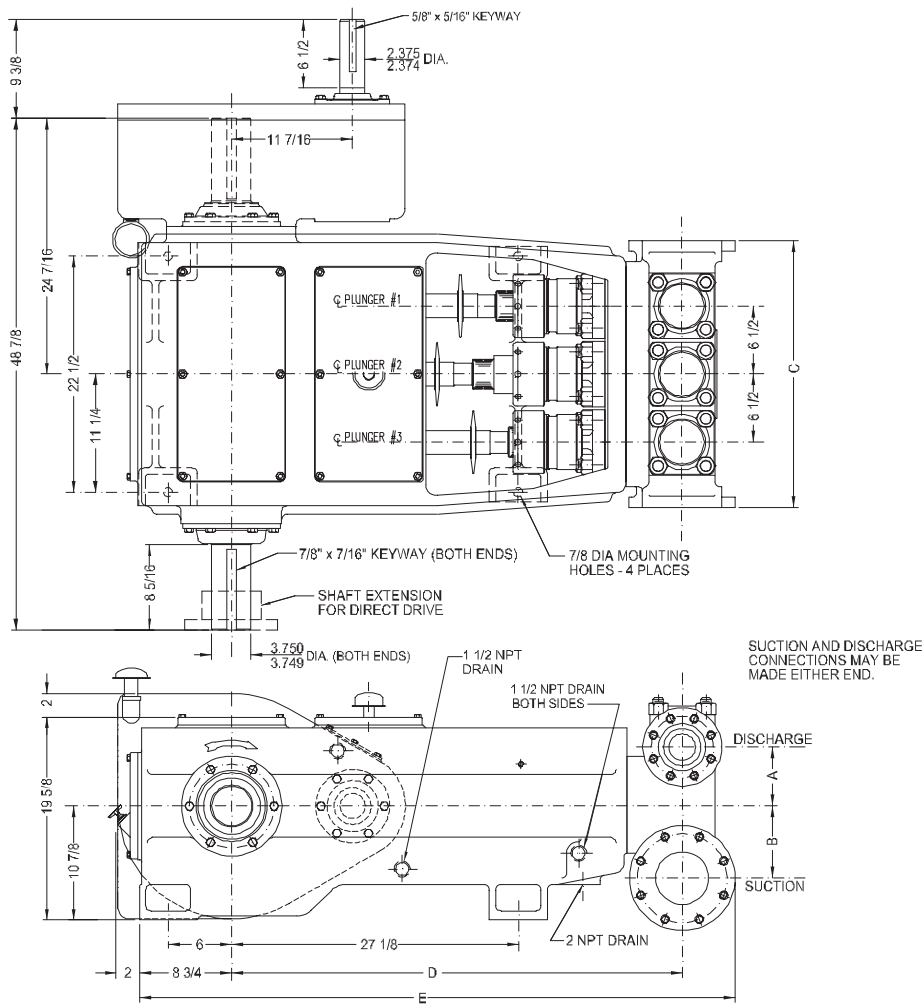
Power End Features:

- Cast iron power frame
- Cast iron crossheads with upper/lower oil grooves
- Replaceable Stainless Steel intermediate rods
- Flooded sump, splash distribution lubrication
- Bronze bearing crosshead pin bushings
- Alloy steel crankshaft with ground journals and polished throws
- Heavy-duty, tapered roller crankshaft bearings
- Precision type, aluminum alloy crankpin bearings
- Ductile Iron connecting rods
- Optional Threaded or Clamp Style Intermediate Rods
- Alloy steel crosshead pins
- Rated rod load is 8590 lbs.

Fluid End Features:

- Threaded Valve Covers
- 17-4 Stainless Steel or Nickel Aluminum Bronze Steel stuffing boxes (Includes nuts)
- General Service, Molded Lip or Aramid Fiber plunger packing
- Plungers-Solid Ceramic or Tungsten Carbide coated
- Spherical suction and discharge valves
- Valve Seat & Valve Body: Nitronic 50
- Spring: Inconel
- Cage: 316L Stainless Steel
- Severe duty valves with inserts available

130T-4 Triplex Plunger Pump



Specifications

Pump Size

maximum plunger size x stroke length in.(mm):

3 5/8 x 4 (92.1 x 101.6)

Rated bhp at 450 rpm (kw): 130 (97)

Rated plunger load, pounds(Kg): 8590 (3899)

Maximum discharge pressure: psi(kPa)

"L" model: 1750 (12,070)

"M" model: 3111 (21,458)

"H" model: 5000 (34,474)

Crankshaft extension: in.(mm)

Diameter: 3 3/4 (95.25)

Length long side: 8 1/2 (215.9)

Length short side: 8 5/16 (211.4)

Keyway (width x depth):

7/8 x 7/16 (22.2 x 11.1)

Maximum recommended sheave

in.(mm): 44 (1118)

Minimum recommended sheave

in.(mm): 24 (610)

For larger sizes: **Contact Factory**

Pinion shaft extension,

if gear reducer is supplied in.(mm)

For belt or chain drive: **Contact Factory**

For direct drive: Diameter: 2 3/8 (60.33)

Length: 6 1/2 (165.10)

Keyway (width x depth):

5/8 x 5/16 (15.9 x 7.9)

Accessory gear reduction unit:

2.60:1, 3.15:1, 3.42:1, 3.89:1, 4.27:1

Oil Capacity, gallons (L)

Crankcase: 5.5 (20.8)

Gear Reducer: 3 (11.40)

Weight, pump only on

wood shipping skids pounds (Kg):

2360 (1070.5)

Gear reducer, approximate pounds (Kg):

500 (226.8)

Pump Model	Flange Connections		Dimensions in inches (mm)				
	Discharge Connection Sizes	Suction Connection Sizes	A	B	C	D	E
130T-4L	2 1/2 (63.5) API-2000 RJ	5 (127) ANSI-150 FF	5 5/8	6 7/8	25 1/2	42 5/8	58 3/8
130T-4M	1 1/2 (38.1) API-5000 RJ	3 (76.2) ANSI-150 FF	4 3/4	5 1/4	23 3/4	41 7/8	55 3/8
130T-4H	1 1/2 (38.1) ANSI-2500 RJ	3 (76.2) ANSI-300 FF	4 3/4	5 1/4	25 1/2	41 1/2	56 3/8

130T-4 Triplex Plunger Pump

Performance Data

PUMP	English Units					150 RPM		250 RPM		300 RPM		350 RPM		400 RPM		450 RPM	
	Plunger Dia. In.	Plunger Area Sq. In.	BPD per RPM	GPM per RPM	Max. Press. PSI	BPD	GPM	BPD	GPM	BPD	GPM	BPD	GPM	BPD	GPM	BPD	GPM
130T-4L	3.625	10.3206	18.3818	0.5361	832	2758	80.4	4596	134.0	5515	160.8	6434	187.6	7353	214.5	8272	241.3
	3.500	9.6211	17.1359	0.4998	893	2571	75.0	4284	124.9	5141	149.9	5998	174.9	6855	199.9	7712	224.9
	3.250	8.2958	14.7754	0.4309	1035	2217	64.6	3694	107.7	4433	129.3	5172	150.8	5911	172.4	6649	193.9
	3.000	7.0686	12.5897	0.3672	1215	1889	55.1	3148	91.8	3777	110.2	4407	128.5	5036	146.9	5666	165.2
	2.750	5.9396	10.5788	0.3085	1446	1587	46.3	2645	77.1	3174	92.6	3703	108.0	4232	123.4	4761	138.8
	2.625	5.4119	9.6390	0.2811	1587	1446	42.2	2410	70.3	2892	84.3	3374	98.4	3856	112.5	4338	126.5
	2.500	4.9087	8.7428	0.2550	1750	1312	38.2	2186	63.7	2623	76.5	3060	89.2	3498	102.0	3935	114.7
130T-4M	2.375	4.4301	7.8904	0.2301	1939	1184	34.5	1973	57.5	2368	69.0	2762	80.5	3157	92.1	3551	103.6
	2.250	3.9761	7.0817	0.2065	2160	1063	31.0	1771	51.6	2125	62.0	2479	72.3	2833	82.6	3187	92.9
	2.125	3.5466	6.3167	0.1842	2422	948	27.6	1580	46.1	1896	55.3	2211	64.5	2527	73.7	2843	82.9
	2.000	3.1416	5.5954	0.1632	2734	840	24.5	1399	40.8	1679	49.0	1959	57.1	2239	65.3	2518	73.4
	1.875	2.7612	4.9178	0.1434	3111	738	21.5	1230	35.9	1476	43.0	1722	50.2	1968	57.4	2214	64.5
130T-4H	1.750	2.4053	4.2840	0.1249	3571	643	18.7	1071	31.2	1286	37.5	1500	43.7	1714	50.0	1928	56.2
	1.625	2.0739	3.6938	0.1077	4142	555	16.2	924	26.9	1109	32.3	1293	37.7	1478	43.1	1663	48.5
	1.500	1.7671	3.1474	0.0918	4861	473	13.8	787	22.9	945	27.5	1102	32.1	1259	36.7	1417	41.3
	1.375	1.4849	2.6447	0.0771	5000	397	11.6	662	19.3	794	23.1	926	27.0	1058	30.9	1191	34.7
Brake Horsepower Required						44		73		87		101		116		130	

PUMP	Metric Units					150 RPM		250 RPM		300 RPM		350 RPM		400 RPM		450 RPM	
	Plunger Dia. mm	Plunger Area cm ²	M ³ /Hr per RPM	L/Sec. per RPM	Max. Press. kPa	M ³ /Hr	L/Sec.	M ³ /Hr	L/Sec.	M ³ /Hr	L/Sec.	M ³ /Hr	L/Sec.	M ³ /Hr	L/Sec.	M ³ /Hr	L/Sec.
130T-4L	92	66.584	0.1218	0.0338	5739	18.3	5.1	30.4	8.5	36.5	10.1	42.6	11.8	48.7	13.5	54.8	15.2
	89	62.072	0.1135	0.0315	6156	17.0	4.7	28.4	7.9	34.1	9.5	39.7	11.0	45.4	12.6	51.1	14.2
	83	53.521	0.0979	0.0272	7139	14.7	4.1	24.5	6.8	29.4	8.2	34.3	9.5	39.1	10.9	44.0	12.2
	76	45.604	0.0834	0.0232	8379	12.5	3.5	20.8	5.8	25.0	6.9	29.2	8.1	33.4	9.3	37.5	10.4
	70	38.320	0.0701	0.0195	9971	10.5	2.9	17.5	4.9	21.0	5.8	24.5	6.8	28.0	7.8	31.5	8.8
	67	34.915	0.0638	0.0177	10944	9.6	2.7	16.0	4.4	19.2	5.3	22.3	6.2	25.5	7.1	28.7	8.0
	64	31.669	0.0579	0.0161	12065	8.7	2.4	14.5	4.0	17.4	4.8	20.3	5.6	23.2	6.4	26.1	7.2
130T-4M	60	28.581	0.0523	0.0145	13369	7.8	2.2	13.1	3.6	15.7	4.4	18.3	5.1	20.9	5.8	23.5	6.5
	57	25.652	0.0469	0.0130	14896	7.0	2.0	11.7	3.3	14.1	3.9	16.4	4.6	18.8	5.2	21.1	5.9
	54	22.881	0.0418	0.0116	16700	6.3	1.7	10.5	2.9	12.6	3.5	14.6	4.1	16.7	4.6	18.8	5.2
	51	20.268	0.0371	0.0103	18852	5.6	1.5	9.3	2.6	11.1	3.1	13.0	3.6	14.8	4.1	16.7	4.6
	48	17.814	0.0326	0.0090	21450	4.9	1.4	8.1	2.3	9.8	2.7	11.4	3.2	13.0	3.6	14.7	4.1
130T-4H	44	15.518	0.0284	0.0079	24623	4.3	1.2	7.1	2.0	8.5	2.4	9.9	2.8	11.4	3.2	12.8	3.5
	41	13.380	0.0245	0.0068	28557	3.7	1.0	6.1	1.7	7.3	2.0	8.6	2.4	9.8	2.7	11.0	3.1
	38	11.401	0.0208	0.0058	33515	3.1	0.9	5.2	1.4	6.3	1.7	7.3	2.0	8.3	2.3	9.4	2.6
	35	9.580	0.0175	0.0049	34474	2.6	0.7	4.4	1.2	5.3	1.5	6.1	1.7	7.0	1.9	7.9	2.2
Kilowatts Required						33		54		65		75		86		97	

Volumetric Rate is based on 100% Volumetric Efficiency. Brake Horsepower/Kilowatts Required is based on 90% Mechanical Efficiency. Not all plunger sizes are shown. Contact National-Oilwell for additional information. For operation below 200 RPM, auxiliary lubrication system required.

Accessories

Rotating Right offers a full line of accessories to ensure long trouble free and safe operation of your multiplex pumps.

Accessories Include:

- Pulsation Dampeners - Suction & Discharge
- Vibration Shock Switches
- Liquid Level Gauges & Switches
- Pressure Safety Valves
- Plunger Lubricators
- Fire Safety Valves
- High Discharge Pressure Switch
- Condensate Drain
- N.A.C.E. Valving
- Lubricator Level Controller
- API Valves
- Drive Options



Expendables



With our worldwide buying power Rotating Right is well equipped to provide a wide range of replacement parts & expendables for virtually all multiplex plunger pumps regardless of make or model.

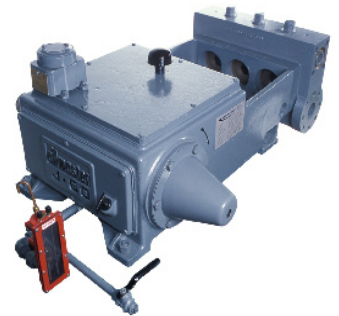


Our expendables inventory includes plungers, packing, brass, valves, bearings, crankshafts, connecting rods and seals.



Repair & Overhauls

Rotating Right service technicians follow strict quality control procedures for every pump repair and overhaul. The use of consistent and reliable re-manufacturing techniques ensure your equipment is returned to you in "Like New" condition.



Head Office:
6120 Davies Road
Edmonton, AB
T6E 4M9

Phone: (780) 485-2010 • Toll Free: (866) 707-7867
Fax: (780) 485-1938
• Calgary • Drayton Valley • Lloydminster
www.rotatingright.com