

ROTATING RIGHT

## MODEL 184T-7 SINGLE ACTING TRIPLEX PUMP



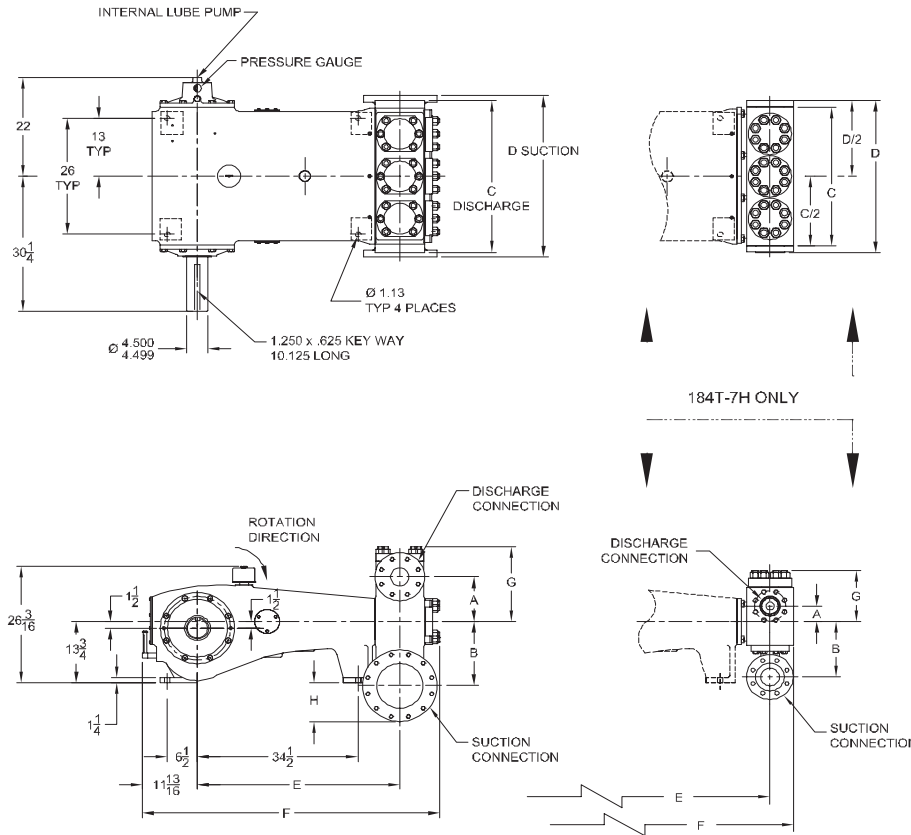
### 184T-7

A 184 horsepower 7" stroke horizontal triplex single acting plunger pump. Available in three end materials at pump speeds up to 265 RPM.

#### Features:

- Cast iron power frame
- Ductile Iron crankshaft
- Heavy-duty roller crankshaft bearings
- Ductile iron connecting rods
- Alloy steel crosshead pins
- Stainless steel extension rods
- Internal pressure lubrication
- Precision type, aluminum alloy crankpin bearings
- Bronze bearing crosshead pin bushings
- Cast iron crossheads with upper/lower oil grooves
- Rated rod load is 11580 lbs.
- Fluid End with Bolted Type Valve Covers
- Removeable Stuffing Boxes & Glands

# 184T-7 Triplex Plunger Pump



## Specifications

### Pump Size:

maximum plunger size x stroke length, in.(mm):  
5.750 x 7.125 (146.05 x 180.975)

**Rated BHP (kW) at 265 RPM:** 184 (137)

**Rated plunger load, pounds (kg):** 11580 (5253)

**Maximum discharge pressure:** psi (kPa)

"XL" model: 728 (5020)

"L" model: 1204 (8299)

"M" model: 2912 (20081)

"H" model: 6000 (41369)

### Crankshaft extension:

Diameter, in.(mm): 4.500 (114.3)

Length, in.(mm): 12.250 (311.15)

Keyway width x depth, in.(mm):

1.25 x 5/8 (31.75 x 15.75)

Maximum recommended sheave diameter,  
in.(mm): 63 (1600.2)

For larger sizes: **Contact Factory**

### Oil Capacity, gallons (L)

Crankcase: 17 (64.35)

### Weight, pump only on

wood shipping skids, pounds (kg)

"XL" model: 4900 (2223)

"L" model: 4600 (2087)

"M" model: 4300 (1950)

"H" model: 3800 (1724)

### Standard Materials for Fluid Ends:

"XL" model

Cast Duplex Stainless Steel

Cast Carbon Steel

"L" model

Cast Nickel-Aluminum-Bronze

Forged/Plate Carbon Steel

"M" model

Cast Nickel-Aluminum-Bronze

Cast Duplex Stainless Steel

Forged/Plate Carbon Steel

"H" model

Forged 15-5 Stainless Steel

Pump Model	Flange Connections		Dimensions (Inches)							
	Discharge Connection Sizes	Suction Connection Sizes	A	B	C	D	E	F	G	H
184T-7XL	4 (101.6)-ANSI 600 FF	10 (254.0)-ANSI 150 FF	10	14 3/8	34	36	43 1/2	63 15/16	16 11/16	8 5/8
184T-7L	4 (101.6)-ANSI 900 FF	6 (152.4)-ANSI 150 FF	8 1/4	11 1/8	33	33	43 5/8	64 3/4	15 3/16	2 7/8
184T-7M	2.5 (63.5)-ANSI 1500 FF	4 (101.6)-ANSI 300 FF	6 7/8	8 3/4	33	33	43 5/8	65 1/8	13 9/16	0
184T-7H	2 (50.8)-ANSI 2500 RTJ	4 (101.6)-ANSI 300 RF	3 7/16	12 7/16	31	34	45 3/16	62	11 7/16	3 11/16

# 184T-7 Triplex Plunger Pump

## Performance Data

PUMP	English Units					100 * RPM		150 RPM		175 RPM		200 RPM		225 RPM		265 RPM		
	Plunger Dia. In.	Plunger Area Sq. In.	BPD per RPM	GPM per RPM	Max. Press. PSI	BPD	GPM	BPD	GPM	BPD	GPM	BPD	GPM	BPD	GPM	BPD	GPM	
	184T-7XL (HP250XL)	5.750	25.9672	82.3820	2.4028	446	8239	240.3	12358	360.4	14417	420.5	16477	480.6	18536	540.6	21832	636.7
	5.500	23.7583	75.3741	2.1984	487	7538	219.8	11307	329.8	13191	384.7	15075	439.7	16960	494.6	19975	582.6	
	5.375	22.6906	71.9869	2.0996	510	7199	210.0	10799	314.9	12598	367.4	14398	419.9	16198	472.4	19077	556.4	
	5.250	21.6475	68.6776	2.0031	535	6868	200.3	10302	300.5	12019	350.5	13736	400.6	15453	450.7	18200	530.8	
	5.000	19.6349	62.2926	1.8169	590	6230	181.7	9344	272.5	10902	318.0	12459	363.4	14016	408.8	16508	481.5	
	4.750	17.7205	56.2191	1.6397	653	5622	164.0	8433	246.0	9839	287.0	11244	327.9	12650	368.9	14899	434.5	
	4.500	15.9043	50.4570	1.4717	728	5046	147.2	7569	220.7	8830	257.5	10092	294.3	11353	331.1	13372	390.0	
184T-7L (HP250BL)	4.250	14.1862	45.0064	1.3127	816	4501	131.3	6751	196.9	7877	229.7	9002	262.5	10127	295.4	11927	347.9	
	4.000	12.5664	39.8673	1.1628	922	3987	116.3	5981	174.4	6977	203.5	7974	232.6	8971	261.6	10565	308.1	
	3.750	11.0447	35.0396	1.0220	1048	3504	102.2	5256	153.3	6132	178.8	7008	204.4	7884	229.9	9286	270.8	
	3.500	9.6211	30.5234	0.8903	1204	3053	89.0	4579	133.5	5342	155.8	6105	178.1	6868	200.3	8089	235.9	
184T-7M (HP250BM)	3.250	8.2958	26.3186	0.7676	1396	2632	76.8	3948	115.1	4606	134.3	5264	153.5	5922	172.7	6975	203.4	
	3.125	7.6699	24.3331	0.7097	1510	2434	71.0	3650	106.5	4259	124.2	4867	141.9	5475	159.7	6449	188.1	
	3.000	7.0686	22.4253	0.6541	1638	2243	65.4	3364	98.1	3925	114.5	4486	130.8	5046	147.2	5943	173.3	
	2.875	6.4918	20.5955	0.6007	1784	2060	60.1	3090	90.1	3605	105.1	4120	120.1	4634	135.2	5458	159.2	
	2.750	5.9396	18.8435	0.5496	1950	1885	55.0	2827	82.4	3298	96.2	3769	109.9	4240	123.7	4994	145.6	
	2.625	5.4119	17.1694	0.5008	2140	1717	50.1	2576	75.1	3005	87.6	3434	100.2	3864	112.7	4550	132.7	
	2.500	4.9087	15.5732	0.4542	2359	1558	45.4	2336	68.1	2726	79.5	3115	90.8	3504	102.2	4127	120.4	
	2.375	4.4301	14.0548	0.4099	2614	1406	41.0	2109	61.5	2460	71.7	2811	82.0	3163	92.2	3725	108.6	
	2.250	3.9761	12.6143	0.3679	2912	1262	36.8	1893	55.2	2208	64.4	2523	73.6	2839	82.8	3343	97.5	
184T-7H (HP250BH)	2.125	3.5466	11.2516	0.3282	3265	1126	32.8	3067	49.2	1970	57.4	2251	65.6	2532	73.8	2982	87.0	
	2.000	3.1416	9.9668	0.2907	3686	997	29.1	2717	43.6	1745	50.9	1994	58.1	2243	65.4	2642	77.0	
	1.875	2.7612	8.7599	0.2555	4194	876	25.5	2388	38.3	1533	44.7	1752	51.1	1971	57.5	2322	67.7	
	1.750	2.4053	7.6308	0.2226	4814	764	22.3	2293	33.4	1336	38.9	1527	44.5	1717	50.1	2023	59.0	
	1.625	2.0739	6.5797	0.1919	5584	658	19.2	1977	28.8	1152	33.6	1316	38.4	1481	43.2	1744	50.9	
	1.500	1.7671	5.6063	0.1635	6000	561	16.4	1685	24.5	982	28.6	1122	32.7	1262	36.8	1486	43.3	
	Brake Horsepower Required					70		105		122		139		157		184		

PUMP	Metric Units					100 * RPM		150 RPM		175 RPM		200 RPM		225 RPM		265 RPM		
	Plunger Dia. mm	Plunger Area cm <sup>2</sup>	M <sup>3</sup> /Hr per RPM	L/Sec. per RPM	Max. Press. kPa	M <sup>3</sup> /Hr	L/Sec.	M <sup>3</sup> /Hr	L/Sec.	M <sup>3</sup> /Hr	L/Sec.	M <sup>3</sup> /Hr	L/Sec.	M <sup>3</sup> /Hr	L/Sec.	M <sup>3</sup> /Hr	L/Sec.	
	184T-7XL (HP250XL)	146	167.530	0.5457	0.1516	3075	54.6	15.2	81.9	22.7	95.5	26.5	109.1	30.3	122.8	34.1	144.6	40.2
	140	153.279	0.4993	0.1387	3361	49.9	13.9	74.9	20.8	87.4	24.3	99.9	27.7	112.3	31.2	132.3	36.8	
	137	146.391	0.4768	0.1325	3519	47.7	13.2	71.5	19.9	83.4	23.2	95.4	26.5	107.3	29.8	126.4	35.1	
	133	139.661	0.4549	0.1264	3688	45.5	12.6	68.2	19.0	79.6	22.1	91.0	25.3	102.4	28.4	120.5	33.5	
	127	126.677	0.4126	0.1146	4066	41.3	11.5	61.9	17.2	72.2	20.1	82.5	22.9	92.8	25.8	109.3	30.4	
	121	114.326	0.3724	0.1035	4506	37.2	10.3	55.9	15.5	65.2	18.1	74.5	20.7	83.8	23.3	98.7	27.4	
	114	102.608	0.3342	0.0928	5020	33.4	9.3	50.1	13.9	58.5	16.2	66.8	18.6	75.2	20.9	88.6	24.6	
184T-7L (HP250BL)	108	91.524	0.2981	0.0828	5628	29.8	8.3	44.7	12.4	52.2	14.5	59.6	16.6	67.1	18.6	79.0	21.9	
	102	81.073	0.2641	0.0734	6354	26.4	7.3	39.6	11.0	46.2	12.8	52.8	14.7	59.4	16.5	70.0	19.4	
	95	71.256	0.2321	0.0645	7229	23.2	6.4	34.8	9.7	40.6	11.3	46.4	12.9	52.2	14.5	61.5	17.1	
	89	62.072	0.2022	0.0562	8299	20.2	5.6	30.3	8.4	35.4	9.8	40.4	11.2	45.5	12.6	53.6	14.9	
184T-7M (HP250BM)	83	53.521	0.1743	0.0484	9624	17.4	4.8	26.1	7.3	30.5	8.5	34.9	9.7	39.2	10.9	46.2	12.8	
	79	49.483	0.1612	0.0448	10410	16.1	4.5	24.2	6.7	28.2	7.8	32.2	9.0	36.3	10.1	42.7	11.9	
	76	45.604	0.1485	0.0413	11295	14.9	4.1	22.3	6.2	26.0	7.2	29.7	8.3	33.4	9.3	39.4	10.9	
	73	41.883	0.1364	0.0379	12299	13.6	3.8	20.5	5.7	23.9	6.6	27.3	7.6	30.7	8.5	36.2	10.0	
	70	38.320	0.1248	0.0347	13442	12.5	3.5	18.7	5.2	21.8	6.1	25.0	6.9	28.1	7.8	33.1	9.2	
	67	34.915	0.1137	0.0316	14753	11.4	3.2	17.1	4.7	19.9	5.5	22.7	6.3	25.6	7.1	30.1	8.4	
	64	31.669	0.1032	0.0287	16265	10.3	2.9	15.5	4.3	18.1	5.0	20.6	5.7	23.2	6.4	27.3	7.6	
	60	28.581	0.0931	0.0259	18022	9.3	2.6	14.0	3.9	16.3	4.5	18.6	5.2	20.9	5.8	24.7	6.9	
	57	25.652	0.0836	0.0232	20081	8.4	2.3	12.5	3.5	14.6	4.1	16.7	4.6	18.8	5.2	22.1	6.2	
184T-7H (HP250BH)	54	22.881	0.0745	0.0207	22512	7.5	2.1	11.2	3.1	13.0	3.6	14.9	4.1	16.8	4.7	19.7	5.5	
	51	20.268	0.0660	0.0183	25414	6.6	1.8	9.9	2.8	11.6	3.2	13.2	3.7	14.9	4.1	17.5	4.9	
	48	17.814	0.0580	0.0161	28916	5.8	1.6	8.7	2.4	10.2	2.8	11.6	3.2	13.1	3.6	15.4	4.3	
	44	15.518	0.0505	0.0140	33194	5.1	1.4	7.6	2.1	8.8	2.5	10.1	2.8	11.4	3.2	13.4	3.7	
	41	13.380	0.0436	0.0121	38498	4.4	1.2	6.5	1.8	7.6	2.1	8.7	2.4	9.8	2.7	11.5	3.2	
	38	11.401	0.0371	0.0103	41369	3.7	1.0	5.6	1.5	6.5	1.8	7.4	2.1	8.4	2.3	9.8	2.7	
	Kilowatts Required					52		78		91		104		117		137		

Volumetric Rate is based on 100% Volumetric Efficiency. Brake Horsepower/Kilowatts Required is based on 90% Mechanical Efficiency.  
 \*Operation below 75 RPM requires an "optional" externally-mounted auxiliary lubrication system.

The information and data on this sheet is accurate to the best of our knowledge and belief, but are intended for general information only. Applications suggested for the materials are described only to help readers make their own evaluations and decisions, and are neither guarantees nor to be construed as express or implied warranties of suitability for these or other applications. National Oilwell makes no warranty either express or implied beyond that stipulated in National Oilwell Standard Terms and Conditions of Sale.

## Accessories

Rotating Right offers a full line of accessories to ensure long trouble free and safe operation of your multiplex pumps.

### Accessories Include:

- Pulsation Dampeners - Suction & Discharge
- Vibration Shock Switches
- Liquid Level Gauges & Switches
- Pressure Safety Valves
- Plunger Lubricators
- Fire Safety Valves
- High Discharge Pressure Switch
- Condensate Drain
- N.A.C.E. Valving
- Lubricator Level Controller
- API Valves
- Drive Options



## Expendables



With our worldwide buying power Rotating Right is well equipped to provide a wide range of replacement parts & expendables for virtually all multiplex plunger pumps regardless of make or model.

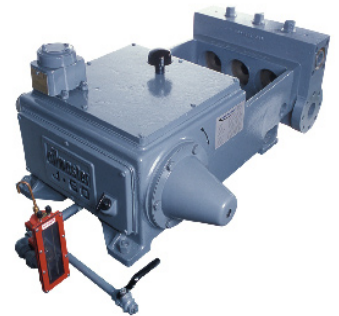


Our expendables inventory includes plungers, packing, brass, valves, bearings, crankshafts, connecting rods and seals.



## Repair & Overhauls

Rotating Right service technicians follow strict quality control procedures for every pump repair and overhaul. The use of consistent and reliable re-manufacturing techniques ensure your equipment is returned to you in "Like New" condition.



**Head Office:**  
6120 Davies Road  
Edmonton, AB  
T6E 4M9

Phone: (780) 485-2010 • Toll Free: (866) 707-7867  
Fax: (780) 485-1938  
• Calgary • Drayton Valley • Lloydminster  
[www.rotatingright.com](http://www.rotatingright.com)