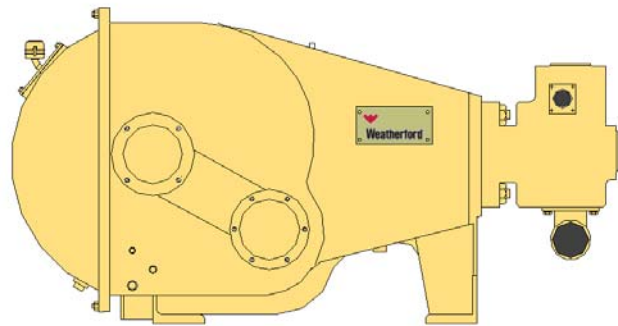


# Triplex Well Service Pump

The Weatherford Model TW-600 is a single acting triplex plunger pump rated for a maximum of 600 HP in well service applications. This versatile pump is specifically designed for traditional well service applications such as acidizing, fracturing, and cementing. To insure maximum performance capabilities, a complete power end lubrication system is standard equipment on all pump



## Specifications

Rated Power .....600 HP  
 Rated Rod Load..... 140,500 LB  
 Maximum Input Speed..... 1,580 RPM  
 Minimum Input Speed..... 225 RPM

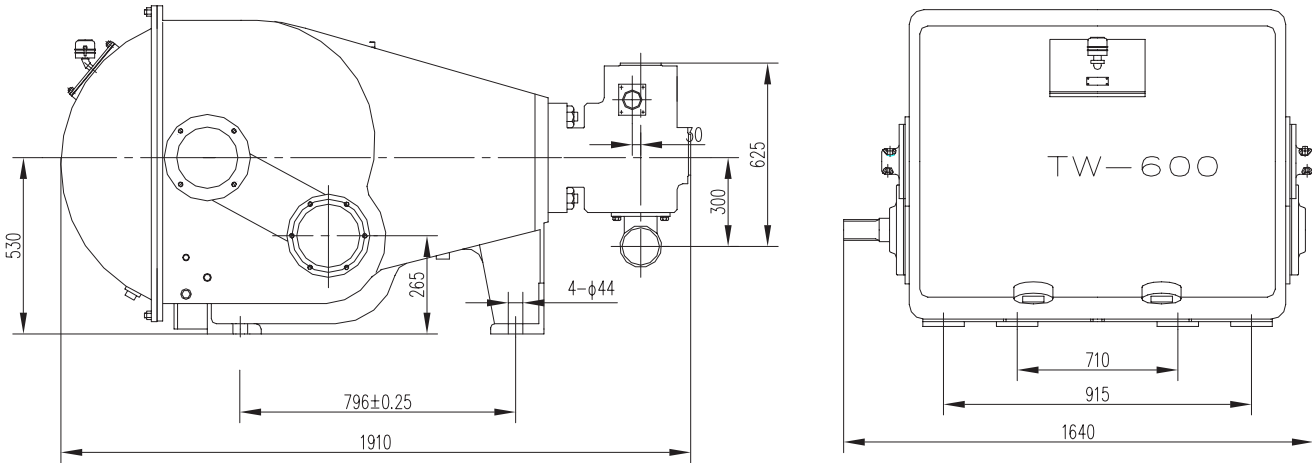
Stroke Length .....6.0 IN  
 Pump Weight ..... 7,480  
 Gear Reduction Ratio .....4.52:1  
 Maximum Fluid Temp. .... 180°F  
 Mechanical Efficiency .....90%

## Performance Ratings

Plunger Diameter (IN)	Performance Parameter	50 RPM	100 RPM	200 RPM	300 RPM	350 RPM
3 3/4	Capacity (GPM)	43	86	172	258	301
	Pressure (PSI)	13,340	10,440	5,220	3,480	2,900
4	Capacity (GPM)	49	98	196	294	343
	Pressure (PSI)	11,600	9,140	4,500	3,050	2,610
4 1/2	Capacity (GPM)	62	124	248	372	434
	Pressure (PSI)	9,280	7,110	3,630	2,320	2,030
5	Capacity (GPM)	76	153	306	459	535
	Pressure (PSI)	7,250	5,800	2,900	1,890	1,600
Horsepower		350	600	600	600	600

# Model TW-600

## General Dimensions



Dimensions are in  
MM

Power Required:  $HP = \frac{GPM \times PSI}{1543}$



# Weatherford

Weatherford International, Ltd.

Note:

1. Capacities shown based on 100% volumetric efficiency. Actual capacities will be lower based on discharge pressures and fluid properties.
2. Maximum continuous and intermittent duty speeds are based on pumping fluids with viscosities similar to water. Consult Weatherford for speed de-rating guidelines for higher viscosity fluids.
3. Drawings shown are typical and should not be used for fabrication purposes.



**Head Office:**  
6120 Davies Road  
Edmonton, AB  
T6E 4M9

Phone: (780) 485-2010 • Toll Free: (866) 707-7867  
Fax: (780) 485-1938  
• Calgary • Drayton Valley • Lloydminster  
[www.rotatingright.com](http://www.rotatingright.com)